



Krabi Resort, Ao Nang

A Thai Traditional Retreat with Private Beach Access

Krabi Resort is a serene haven located directly on Ao Nang Beach, the most popular and picturesque beach in Krabi. It stands as the only resort in Ao Nang with private beachfront access, offering guests an exclusive experience amidst the white sandy shores and crystal-clear waters of the Andaman Sea.

Conveniently just a 30-minute drive from Krabi International Airport, the resort is an ideal destination for travelers seeking both relaxation and adventure. Krabi is renowned for its natural beauty, boasting stunning coral reefs, pristine beaches, lush forests, and countless islands. Explore the two world-class beaches, Ao Nang and Railay, which are perfect for diving, dining, shopping, and more.

For nature enthusiasts and adventurers, Krabi offers impressive limestone cliffs that attract rock climbers from around the world, as well as a nearby National Park just 40 kilometers away, where you can discover scenic lakes, caves, waterfalls, and rich forest landscapes. Whether you seek tranquility or thrilling outdoor activities, Krabi Resort provides the perfect backdrop for an unforgettable Thai getaway.

ACCOMMODATION

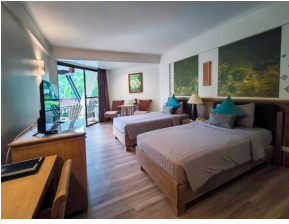
THEMED CONCEPTS

Villas : Thai traditional style scattered throughout the resort's garden.

Hotel Buildings : Comfortably furnished rooms with a modern twist.

Luxury Rooms : Spacious and luxury rooms surrounding with the tropical garden.

We offer 215 exceptional accommodations, including rooms in hotel buildings, bungalows, private and complex villas, all nestled within our lush tropical gardens and surrounded by the beauty of unspoiled nature and mountain views. Each guestroom is thoughtfully designed, featuring either traditional Thai décor or a contemporary modern style with an elegant Oriental touch, ensuring a blend of comfort and cultural charm for every guest.



DELUXE ROOM

Total Room: 74 rooms

Size: 30 sq.m **Double Bed:** 20 Rooms **Twin Bed:** 54 Rooms

View: Pool View & Garden View



LUXURY GRAND ROOM

Total Room: 36 rooms

Size: 47 sq.m **Double Bed:** 18 Rooms **Twin Bed:** 18 Rooms

View: Garden View



LUXURY GRAND POOL

Total Room: 80 rooms

Size: 60 sq.m **Double Bed:** 50 Rooms **Twin Bed:** 30 Rooms

View: Pool View & Garden View



SUITE HOTEL 2 BEDROOM

Total Room: 2 unit

Size: 48 sq.m **Double Bed:** 2 Rooms **Twin Bed:** 2 Rooms

View: Pool View



PLUNGE POOL VILLA

Total Room: 4 rooms

Size: 53.7 sq.m **Double Bed:** 4 Rooms

View: Garden View



TROPICAL POOL VILLA

Total Room: 13 rooms

Size: 143 sq.m **Double Bed:** 13 Rooms

View: Garden View



BEACHFRONT POOL VILLA

Total Room: 6 rooms

Size: 180 sq.m **Double Bed:** 6 Rooms

View: Seaview

ROOM FEATURES

All room types feature the following standard amenities :

- Thai traditional décor
- Dressing table
- Individually controlled air-conditioning
- Hair dryer
- Tea and coffee making facilities
- IDD telephone
- Satellite TV, including CNN, BBC, Deutsche TV, NHK, RAI etc.
- Private terrace / balcony with chairs
- Broadband Internet access on Wi-Fi (Free of charge)
- En-suites facilities with either shower or bathtub or both
- Bathtub is available in the following room types, Suite Hotel, Luxury Grand Pool, Beachfront Pool Villa and Tropical Pool Villa (with private outdoor swimming pool).

RESTAURANTS & BAR

OUTLETS	LOCATION	OPENING HOURS	SERVING
The Boat Restaurant	By the beach	6.30 – 23.00	American Breakfast Buffet Thai & International all-day dining Last order at 10.00 PM
Sailor Bar	By the beach	10.00 – 23.00	Fresh cool drinks/ cocktails/ local spirits/ imported liquors / snacks
Pool Bar	By the main pool	10.00 – 19.00	Fresh cool drinks/ cocktails/ local spirits/ imported liquors / snacks
Skipper Pool Bar	By Skipper pool	10.00 – 19.00	Fresh cool drinks/ cocktails/ local spirits/ imported liquors / snacks

MEETINGS & EVENTS

VENUES	Floor Area Sq.m.	Ceiling Height	Size	Theatre	Classroom	U Shaped	Banquet
Sai Ngoen Room	300	6.0	11*27.9 m	320	220	150	250
Sai Thong Room	192	4.8	7.5*24 m	130	100	60	100

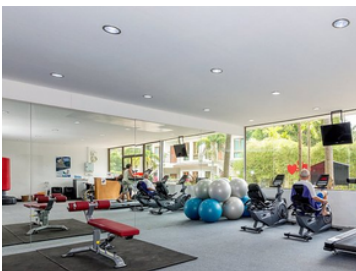


GUEST SERVICE & FACILITIES

- Wi-fi Internet (complimentary)
- Ample car parking spaces (complimentary)
- Tour services
- 2 Swimming pools / 2 Kids pools
- Full range of meeting facilities
- Airport transfer service
- Mini golf course
- Medical clinic (doctor on call)
- CCTV and security 24 hours
- Complimentary safe deposit box in-room and at the reception

SPORT & RECREATION

- | | |
|------------------|--------------------|
| • Sightseeing | • Petanque |
| • Diving / Scuba | • Beach Volleyball |
| • Swimming | • Water Aerobics |
| • Sunbathing | • Jogging |
| • Bird watching | • Beach Yoga |
| • Canoeing | • Cycling |
| • Fishing | • Snorkeling |
| • Sailing | • Sailing |



GENERAL INFORMATION

Check-in: 02.00 p.m.

Check-out: 12.00 p.m.

Date Opened: 16th April 1982

Date Last Renovated: 31st October 2024

Credit Cards: VISA, AMEX & Mastercard

DISTANCE FROM:

Ao-Nang night market.....100 Meters	Ao-Nang boxing stadium.....2 KM
Krabi Town.....20 KM	Tesco Lotus.....25 KM
Krabi International Airport.....25 KM	Big C24 KM
Hot spring waterfall.....70 KM	Outlet Village.....24.5 KM
Emerald pool.....80 KM	Tiger cave Temple.....22 KM
Railay bay by long tail boat.....15 Minutes	Phi Phi Island by speed boat.....45 Minutes

HOW TO GET TO KRABI

By air: There are several airlines operating scheduled flights from Bangkok. These include Thai Airways International, Nok Air and Air Asia. The trip takes 1.20 hours. For more information, please visit www.krabiairport.org. Bangkok Airways runs scheduled flights from Koh Samui to Krabi. More details please visit: www.bangkokair.com.

On international routes, there are direct scheduled flights from Singapore and Malaysia. Thai Air Asia runs scheduled flights from Malaysia; Scoot Airways operate flights to Krabi from Singapore. There are also chartered flights from Europe, which normally operate during winter season. And daily flight from Fly Dubai that can connect to all Emirates flights.

By bus: From Bangkok, there are frequent buses departing from the Southern Bus terminal.

Comfortable air- con buses are available at reasonable prices. The trip takes about 12 hours. For more information, please visit: www.transport.co.th

HOTEL CONTACT DETAILS

Website : www.krabi-resort.net

Krabi (Head Office) : 232 Moo 2, Ao Nang Beach, Muang Krabi 81000 Thailand Tel.+66 (0)7563 7030-3 | fax. +66(0)7563 7051

E-mail : reserv@krabi-resort.net



Latitude: 8° 02' 06.59"N

Longitude: 98° 49' 01.99"E

REMARKS: Krabi Resort is one of the 2 properties under C. Krabi Group. Other properties include Timber House Resort, Ao Nang, Krabi (www.krabitimberhouse.net).